

Machine Mounts Isolate Vibration

Gerb Vibration Controls Systems
booth 1518

Gerb Vibration Control Systems, Inc., Lisle, IL, manufactures standard and custom machine mounts and foundation



systems for the vibration isolation of heavy equipment, including metalworking presses, machining centers, roll grinders and CMMs. Representatives will be on hand to discuss the firm's civil-engineering services for foundation design of an elastically supported machine.

Gerb machine mounts primarily consist of helical steel springs and viscous dampers—the Spring-Viscodamper element. The mounts significantly reduce transmitted force, requiring much smaller foundation dimensions and resulting in more efficient construction and versatility of machine location. **write no. 4046**

Hard Bronze Alloys

Ampco Metal Inc.
booth 2110

Ampco Metal Inc., Arlington Heights, IL, supplies hard bronze alloys—A18, A21, A22, A25, etc.—in various shapes,



formed via the continuous-cast process. The company's close control of its foundry techniques gives its alloys a distinctive, uniform grain microstructure. The results are high strength, ductility and hardness for severe-service environments.

write no. 4047

Special High-Accuracy Strip

Precision Steel Warehouse
booth 1625

Precision Steel, Franklin Park, IL, will showcase a low-carbon strip steel with an AISI 1010 chemistry, extremely accurate in thickness and with a Rockwell range of B90/100. It is used for automobile- and truck-axle shims, arbor spacers and where combined hardness, flatness and accuracy are important. The full-hard material comes with restricted thickness tolerances of ± 0.00025 in., in sheet thickness from 0.010 to .050 in. and with a maximum width of 14 in.

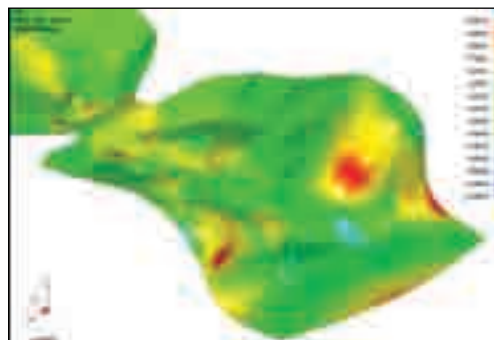


write no. 4048

Cost-Effective Simulation Software

ETA Software, Inc.
booth 1917

Featuring 3D capabilities and designed to improve efficiency, Dynaform software, displayed at the booth of ETA Software, Troy, MI, streamlines the three phases of die



development. For the quoting stage, a Blank Size Engineering module quickly generates a blank size, nest and piece price. For the design phase, a Die Face Engineering module includes a fast surface-modeling tool for building the die face, including binder and addendum surfaces. For the digital tryout phase, a Formability Simulation module will confirm that the part is

formable by predicting common problems such as cracking, wrinkling, thinning and springback before any physical tooling is created. *Photo courtesy of Max-Die Group, Oldcastle, Ontario.*

write no. 4049

Crossover Nitrogen System

Forward Industries
booth 1807

Forward Industries, Plymouth, MI, introduces its Crossover Nitrogen System (CNS), a step up in productivity from base plates. The CNS was engineered for customers who want the advantages of a base plate without the thin base plate that can cause



deflection in the tool, and without all of the hoses and fittings that can wear out and leak. The CNS features a 2¼-in. plate that is 11 times more rigid than a 1-in. base plate, for consistent pressure and repeatable die operations. Bore-sealed cylinders resist chips and scratches.

write no. 4050

Modular Press Construction Offers Numerous Benefits

Schuler Inc.
booth 905

Schuler Inc., Canton, MI, will unveil its S-series mechanical transfer and progressive-die presses. The S series encompasses presses from 1000 to 3500 tons that utilize standardized construction modules to help minimize press costs and delivery times. The S series can be configured with eccentric drives to deliver maximum strokes/min., or link-drive units for complex draw applications. All S-series presses are heat-treated to relieve stress from welding, resulting in high structural stability, precision and durability. They also feature a compact footprint for ease of pit construction and installation.



Also on exhibit will be the expanded technologies of Schuler's tri-axis modular transfer systems, showcasing the AT3 model. The new generation of AT3 transfers offer a span as wide as 29 ft. and come in three weight-handling classes. The closed clamping boxes can be located inside the press uprights or outside, and mounted either above (hanging) or below (standing) the transport level.

write no. 4051

Quick-Die-Change Engineering and Consulting

Lightning Time Savers
booth 1761

Lightning Time Savers, Inc., Nicholasville, KY, offers quick-die-change (QDC) engineering, consulting and hardware,



including inhouse motivational, technical and training seminars on how to get a QDC project started using the team concept. The firm also carries a complete line of hardware, featuring its half-turn mechanical die clamp and die-handling equipment.

write no. 4052

Machine Guards and Devices

The Positive Safety Mfg. Co.
booth 1747

The Positive Safety Mfg. Co., Eastlake, OH, will feature its line of pullbacks and holdbacks for presses and press brakes.

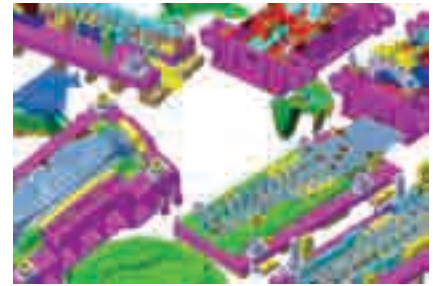


Another product, the Touch-O-Matic, used for finger protection on riveting, eye-letting and spot-welding applications, will be demonstrated, as will a variety of hand tools such as pliers and magnetic and suction-cup lifters. **write no. 4053**

Die Design and Simulation

Die Cad Group Inc.
booth 2026

Die Cad Group, Inc., Grand Rapids, MI, will promote its ability to process, simulate and design progressive, line and transfer dies for the automotive, appliance and office-furniture industries. All design processes are validated using Pamstamp 2G simulation software; designs are provided in Catia V5.

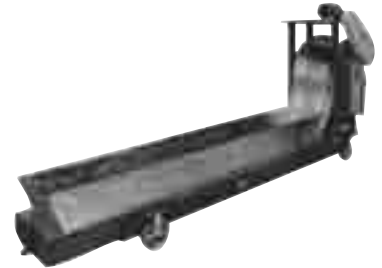


write no. 4054

Belt-Free Magnetic Conveyors

Puritan Magnetics
booth 1448

Puritan Magnetics, Oxford, MI, will showcase its line of belt-free magnetic conveyors for conveying stamping scrap, knockouts, or chips and turnings from lathes, mills, presses and other metalworking machinery. The virtually maintenance-free design eliminates the associated jamming, tearing and premature wear with belt-type conveyors. Internal magnetic assemblies attached to heavy-duty roller chain travel around the inside of the conveyor body. The magnetic field projects through the stainless-steel conveying surface, attracting parts or scrap to its surface. As the magnet assemblies travel inside, the ferrous objects convey externally along the stainless-steel slider bed until they are discharged.



write no. 4055

Portable, Computerized Part Measurement

Faro Technologies, Inc.
booth 2230



Faro Technologies, Inc., Lake Mary, FL, and its international subsidiaries design, develop and market portable, computerized measurement devices and software, much of it to be displayed at the show. These products allow manufacturers to perform 3D inspections of parts and assemblies on the shop floor, helping eliminate manufacturing errors.

Products include the portable Faro Gage and Gage-Plus. They mount on machinery and measure parts in process with accuracy to 0.0002 in., then generate detailed reports. Also, the FaroArm and ScanArm portable computerized measurement devices create a 3D "blueprint" of a part or of machine components that make parts. As the user guides the arm's tip or scanning laser beam over the entire surface, the system's laptop computer draws and records the 3D measurements.



write no. 4056

Weld Studs and Welding Systems

Stud Welding Associates/Pro Weld
booth 1643

Stud Welding Associates/Pro Weld, Elyria, OH, manufactures and distributes a range of threaded, nonthreaded, tapped and special arc and capacitor discharge weld studs; welding systems for automation, arc and capacitor discharge applications; and accessories. Demonstrations will be given on the advantages of this end-welding process that can provide a distortion- and blemish-free superior-strength fastening alternative with no drilling or tapping.

write no. 4057

Automated Part-Quality Verification

Signature Technologies
booth 1021

A new addition to the signatureACE product line from Signature Technologies, Oak Point, TX, is the APC module that provides a simple and reliable verification of part quality. Users can interface directly to any standard analog position device and measurement transducer. Strain-gauge conditioning is built in. For example, very precise in-die measurements can use analog proximity sensors for dimensional measurement and position sampling.

In addition, the firm's SAMview software has been modularized, enabling purchase of only those functions needed. New is the SAMview production-monitoring SQL product that automatically backs up all tool-based production information and integrates the data with popular enterprise-software products. SQL provides good product-liability protection by recording critical process-related criteria about each part made.



write no. 4058

High-Speed Hydraulic Presses

Neff Press, Inc.
booth 1639

Neff Press, Inc., St. Louis, MO, designs and manufactures high-speed hydraulic production presses with forces from 2 to 1500 tons. The company can build a hydraulic press for most custom applications. Its standard C-frame, two-post, four-post and gib-guided machines can be fully integrated by its engineers to meet customer requirements.



write no. 4059

High-Volume Precision Metalformer

Art Technologies
booth 2155

Art Technologies, Hamilton, OH, combines proven past techniques with innovative engineering and the latest available production technology to offer



unique solutions for manufacturing difficult and custom stampings, bearings and assemblies. The shop houses 12 presses ranging from 45 to 800 tons, 11 assembly machines, four welding machines and a full-service toolroom.

Art specializes in setting up customer-specific manufacturing cells. Once established, documentation then is written and followed per ISO 9001 and TS 16949: 2002. Bring your parts to the booth to discuss manufacturing methods.

write no. 4060

New Weld Monitors

**Miyachi Unitek
booth 1743**

Miyachi Unitek, Monrovia, CA, showcases its new weld monitors, the MM370 and MM380. The machine-mounted MM370 builds on the success of the company's MM326, with increased capability and new features. The hand-held MM380 provides rapid, precise and comprehensive measurements of the weld process.

Both monitors feature a 5-in. display that provides graphical displays of waveform time and amplitude, in addition to numeric peak and average values. The MM370 measures current, voltage, force and displacement and can set limits and configure comprehensive machine I/O. The MM380 uses a weld-through sensor, which measures current, voltage and force simultaneously between the electrodes. Waveforms and data can be output through

a built-in printer (standard on the MM370 and optional on the MM380), or via a COM port for screen capture and data collection. Both monitors can measure single phase AC, DC and AC-inverter weld controls.

write no. 4061

Mechanical Press Clutch-Brake Control System

**Girard Engineering, Inc.
booth 2139**

Girard Engineering, Inc., Strongsville, OH, displays its new clutch-brake control



system, which meets or exceeds all OSHA and ANSI safety requirements for a mechanical press. This system uses dual Allen Bradley CompactLogix PLCs as well as an Allen Bradley PanelView Plus for simplified operation, and is expandable to grow as users' manufacturing requirements change. The company also is an authorized ABB robot-system integrator, and this control system can be integrated into a robotics cell as well as incorporate other line automation. **write no. 4062**

Custom-Formulated Drawing Compounds

**Engineered Lubricants Co.
booth 352**

Engineered Lubricants, St. Louis, MO, introduces a line of heavy stamping and drawing fluids available for trial. Its laboratory can help formulate the optimal product for any application.

Visitors also are invited to learn about the firm's newly updated preventive-maintenance program. **write no. 4063**

High-Force, Compact Gas Springs

Hyson Products
booth 1107

Hyson Products, Brecksville, OH, focuses on its newest, most innovative line of gas springs, the Tanker T (TNKT) and Tanker S (TNKS).

This latest generation of the Tanker gas spring encompasses two versions: the TNKT and the TNKS. The springs offer high force in a short height with contact forces from 2200 to 15,400 lb. and full stroke forces from 3900 to 27,600 lb. Both feature dynamic lubrication to reduce heat buildup and extend spring life, a bore seal to resist contamination and rod damage, and the corrosion-resistant nitrided rod, self-aligning to accept normal die movement and a degree of sideload without damaging cylinder seal surface. Both spring types are offered in four sizes from 1000 to 6600, and in long strokes to 8.86 in.

The TNKT incorporates an SAE-4 (7/16-20) port to accommodate standard full-sized hoses, and uses standard T2B flange mounts. The shorter TNKS springs incorporate either an M6 or G 1/8 port for use with the Micro EZ hose system, and use the same flange mounts as Hyson's T3 line.

write no. 4064

New Version of Tool-and-Die Software

Vero International, Inc.
booth 1914

Vero International, Detroit, MI announces its new Version 14.1 of VISI-Progress, which will be released and displayed at METALFORM.

In the new version, users will be able to create their own catalogs and libraries of parametrically driven die components, which include machining instructions, for inclusion in die designs. When a design

is complete and the CAD file is sent to the machining department, the automatic machining instructions can be extracted from the file for automatic NC programming of die plates and blocks in the CAM system.

For diemakers, the new version includes four- and five-axis machining in addition to its currently integrated three-axis machining capabilities.

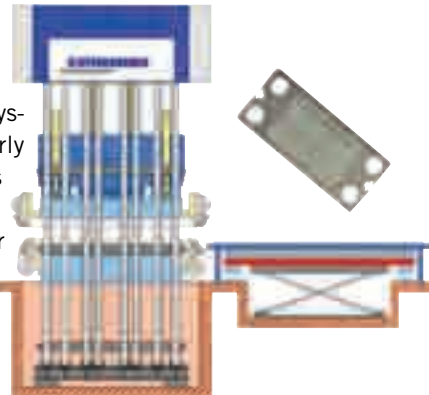
write no. 4065



Equip a Hydraulic Press for Embossing

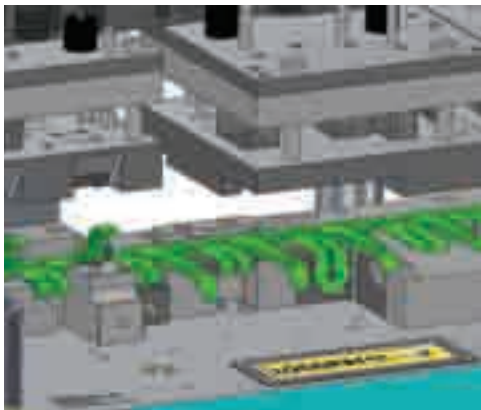
Dieffenbacher
booth 353

Dieffenbacher, Eppingen, Germany, a manufacturer of hydraulic presses and automation systems, has developed a new system for embossing large blanks, particularly stainless-steel blanks. Embossed products are produced at high tonnages and with a high degree of accuracy on the Dieffenbacher X-Tech embossing line. Dieffenbacher supplies a fully automated X-Tech line for a rated press tonnage of 12,000 tons, a working stroke of 400 mm and an installation space of 1000 mm. **write no. 4066**



Die-Design Software and Services

Accurate Die Design, Inc.
booth 1931

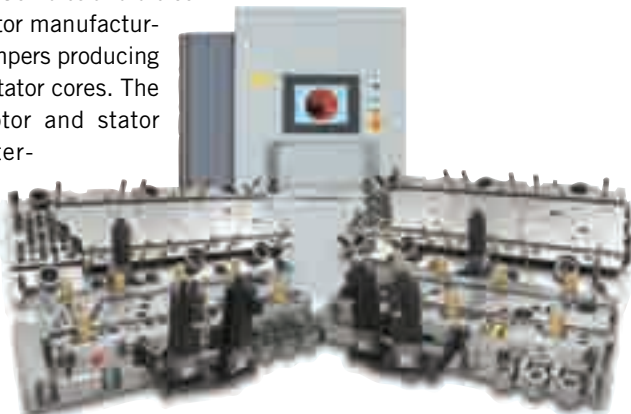


Accurate Die Design, Inc., New Berlin, WI, provides die-design software, training and support, as well as die-design and forming-analysis services to die shops, stampers and OEMs. It uses SolidWorks-based Logopress3 die-design software and Forming Technologies' (FTI) forming-analysis and flat-blank-prediction software. The firm is the North American distributor and technical center for Logopress3 and is a reseller for FTI. **write no. 4067**

Lamination Dies for Motor Manufacturing

LH Industries
booth 1447

LH Industries Corp., Fort Wayne, IN, will showcase its ability to engineer and build precision carbide lamination dies and die controllers for electric-motor manufacturers and lamination stampers producing interlocked rotor and stator cores. The firm also supplies rotor and stator cores, and other interlocked electromagnetic cores, through its LH Stamping division. Die systems and stamped products embody the LH Carbide proprietary methods of Autolok, for skewed and rotated rotor or stator cores, and Varilok, for cores of complex 3D shape. **write no. 4068**



Die Sets, Tooling Components & Hydraulics

Anchor Lamina
booth 945

Anchor Lamina, Farmington Hills, MI, will showcase its die sets and tooling components. Products manufactured include machined plate, ejector



boxes, guiding elements, mold components, wear products, die accessories, springs, cams, punches and retainers, rotary benders, in-die tapping units, portable hydraulic drilling equipment, die setters, die separators, hydraulic motors, fabrications and fixture bases. **write no. 4069**

Pressroom Automation

Automatic-Systeme Dreher GmbH
booth 1961

Automatic-Systeme Dreher, Germany, showcases its complete automation products for sheetmetal forming. Products



include coil-handling equipment such as decoilers, straighteners and feeders; blank destackers and loaders; and transfer systems for sheetmetal forming as well as cold, warm and hot forging.

The company also can modernize existing equipment to achieve higher productivity and improved part quality. **write no. 4070**

Servo Roll Feeds, Straighteners and Coil Reels

Coe Press Equipment
booth 822

Coe Press Equipment, Sterling Heights, MI will introduce its PowerLine series of servo roll feeds, straighteners and coil reels designed to effectively process light-gauge and narrow materials. The company also will display a variety of pressroom and coil-



processing technologies. These include high-production blanking and cut-to-length lines capable of processing coils to 0.250 in. thick by 78 in. wide and weighing to 60,000 lb. at speeds to 300 ft./min.

Also featured are direct-transfer press-feed systems capable

of running as many as five different modes and handling various material shapes. Oscillating shear dies and presses for producing net-shape blanks will be showcased as well as conventional coil-feed lines capable of processing materials 0.010 to 0.500 in. thick and 2 to 78 in. wide in coil weights from 2000 to 80,000 lb. The company also offers SpaceMaster compact coil lines—15 to 16 ft. long—for feeding a range of materials and weights.

write no. 4071

Hydraulic Clamping System for Quicker Press-Brake Setup

Wilson Tool International
booth 1231

Wilson Tool International, White Bear Lake, MN, features the new PowerExpress hydraulic-clamping system, which company officials claim delivers the improved speed, ease of use, precision and reliability needed to maximize the productivity of any press brake using American-style tooling.



The system facilitates rapid press setups by clamping and seating tools in a single operation. Once the operator loads the tooling, one touch of the pendant control activates the hydraulic action. Within seconds, the tooling is precisely seated and clamped along the full length of the beam.

Its modular design—it comes in manageable 2-ft. sections—eases clamp installation while holding tooling of any length. Unlike other clamping systems that may require several operators to move and install the beams over a period of hours, a single experienced operator can install PowerExpress in less than 1 hr. And with its streamlined profile, the system provides more clearance for bending—30-deg. bends are possible in both the front and back of the beam.

Another feature: Should a problem occur, the system's modular design enables it to continue operating after a section is removed for maintenance, significantly reducing downtime.

For maximum clamp life, every PowerExpress clamp is treated with Wilson Tool's Nitrex high-endurance surface enhancement that provides a surface hardness of HRC-70, extending clamp life by several times that of untreated clamps.

write no. 4072

Variety of Press Controls

Toledo Integrated Systems
booth 915

Toledo Integrated Systems, Holland, OH, will display Press Pilot press controls, PressWatch tonnage monitors, AutoCell



calibration load cells and all-in-one press-control systems with a variety of operator interfaces.

The company will introduce the Press Pilot 150 press control, a compact resolver-, encoder- or cam-based system with Ethernet communication a standard feature. This control is ideal for press-control updates and retrofits, according to company officials.

Toledo Integrated Systems offers off-the-shelf and custom turnkey control systems for all styles of hand-fed, automatic and transfer presses.

write no. 4073

Tool Design and Manufacture

A-G Tool & Die Co.
booth 2114

A-G Tool & Die Co., Miamitown, OH, provides tooling for the sheetmetal-stamping industry. In addition to designing and manufacturing production-ready tooling, the company assists with engineering changes to existing tooling as well as maintenance needs. A-G provides state-of-the-art technology such as CAD forming-simulation software and CAM machinery. **write no. 4074**

Benchtop Presses for Assembly

Tox-Pressotechnik
booth 1815

Tox-Pressotechnik, Warrenville, IL, has expanded its product line of precision presses with new benchtop presses for universal assembly operations. The pneumatic-assisted hand-lever presses, type PFH, combine a manual approach



stroke with a pneumatic work stroke at the touch of a button. All PFH presses are available in PFHL (increased working height) versions, and PFHW (increased throat depth) versions. And all presses have height adjustment over an integrated cranking mechanism.

The highlight of these presses is the ram-guidance system, consisting of a precision linear-ball-rail guide setup such as

those used in machine tools and measuring equipment. These guides are noted for their long-term accuracy and repeatability, and are preloaded so that no re-adjustments are needed. The precision Tox-FinePress PFH line comprises press-force ranges from 8.5 to 57.5 kN. A basic tool set is included with each press.

In addition, the company offers toggle, rack-and-pinion and pneumatic presses. All presses feature a standard tool fixture

with a quick-chuck system, ensuring rapid and safe tool clamping. All this is done without any damage to the ram, which is common with set-screw tool fixtures, claim company officials. Retrofittable accessories include return-stroke locks, ergonomic handles, linear slide tables, rotary-indexing tables, cycle counters, two-hand controls for the pneumatic presses, universal tables, and process-monitoring systems and sensors. **write no. 4075**

Aluminum Coil

United Aluminum Corp.
booth 1746

As a specialty rolling mill, United Aluminum Corp., North Haven, CT, rolls,



anneals and slits to tailor aluminum coil to customer applications. The company offers a range of alloys, including brazing sheet, all tempers and special finishes. It provides close tolerances in any gauge from 0.004 to 0.160 in. and in widths to 37 in. A full metallurgical staff is available for product development.

write no. 4076

New Software for One- and Two-Axis Motion Controllers

Delta Computer Systems, Inc.
booth 1942

Delta Computer Systems, Inc., Vancouver, WA, features new RMC70Tools software for the RMC70 series of one- and two-axis motion controllers. Among the many new features: an advanced automated Tuning Wizard for rapid and simple position axis tuning, and



an Active Damping control for hydraulic and pneumatic servo applications. The automated Tuning Wizard walks the user through a simple process to obtain a behavioral model for the motion axis being tuned. Then, the new Gain Calculator tool generates initial PID and feedforward gains to closely approximate the desired system response. The Tuning Wizard then enables the user to select a system response ranging from "conservative" to "aggressive" using a slider bar. This automated tuning process saves time on system startups and during machine operation should component or process changes make retuning necessary.

The Active Damping feature is valuable for reducing oscillation when controlling systems with low damping or significant compression, such as servo-pneumatic applications or hydraulic systems with small cylinders moving heavy loads. It also is necessary for achieving compliant motion in animation applications. **write no. 4077**

Space-Saving Coil Line

*CHS Automation/Pneumatic Feed Service
booth 1619*

CHS Automation, Roseville, MI, will feature a space-saver coil-feed line consisting of a motorized coil reel that pays off into a servo feed/straightener combination. The servo feed, featuring Indramat servo drive and controls, will be under power for demonstration.



write no. 4078

Pneumatic Feed Service (PFS) will exhibit a remanufactured powered straightener outfitted with a new AC variable-frequency drive and control package.

Die Builder Offers Production Support

*K&S Tool, Die & Manufacturing
booth 2124*

K&S Tool, Die & Manufacturing, Ixonia, WI, operates a modern 115,000-sq.-ft. facility that builds all types of stamping dies. Its 41,000-sq.-ft. stamping department houses presses from 150- to 800-ton capacity and bed sizes to 80 by 126 in. Additional production processes include CNC machining, laser (3600 and 2600 W) and waterjet cutting, fabrication (250-ton press brake), assembly and robotic welding.

write no. 4079

Die Sets, Guiding Components and Die Springs

*Lempco
booth 2047*

Lempco, Cleveland, OH, will showcase its line of ball-bearing and plain-bearing



die sets, guiding components and springs, manufactured for the metal-stamping industry. Lempco is the innovator of the rotating ball cage, known as the Retainer.

write no. 4080

Die Sets and Die Components

Danly IEM
booth 1731

Danly IEM, Cleveland, OH, will showcase die sets and die components,



including machined plate, guide posts, bushings, die springs, punches and retainers, wear products, cam units, Accu-Bend rotary benders, in-die tapping tools, air presses, urethane, diemaker supplies, fabrications and fixture bases.

write no. 4081

O-Rings and Seals

Apple Rubber Products
booth 2242

Apple Rubber Products, Lancaster, NY, displays O-rings and custom seals—



rubber bonded to metal, plastic and filters materials. Services include engineering assistance and QC testing. Complete capabilities include design to prototype to production. The company has a Class 7 cleanroom. **write no. 4082**

Push/Pull Die-Loading System

Pacesetter Systems, Inc.
booth 1800



Pacesetter Systems, Inc., Valencia, CA, presents the Power Pallet for die load and unload. The Power Pallet conveniently attaches to a forklift and can push/pull as much as 6000 lb. of die weight. It's less than half the size of a die cart, which makes it simple to store. The pallet docks on the bolster of any standard press, and then it's ready to load or unload dies with just the push of a button. This simple and efficient method virtually eliminates the strain on your workforce and dramatically reduces downtime between die changes. **write no. 4083**

Vibration Isolators for Large Presses

Vibro/Dynamics Corp.
booth 1137

Vibro/Dynamics Corp., Broadview, IL, will introduce several new products, including its expanded MX-series vibration isolators for large metalforming presses. MX systems are high-performance elastomer-type isolators that can be tailored to meet any installation need. Options include built-in leveling devices, swivel/pivot mechanisms, off-center attachment bolts and openings for hydraulic jacks.



Vibration control is accomplished through a modular system of elastomer cushions provided in various combinations of stiffness and layers. This allows each mounting system to be customized based on press specifications, type of job, environment and customer preference.

Other products include coil-spring-type isolators that allow presses to operate in close proximity to sensitive equipment and neighbors. Viscous and material-damped spring isolators also are available. **write no. 4084**

Automation Solutions from Stack to Rack

Güdel Inc.
booth 928

Güdel Inc., with North American sales and service facilities in Ann Arbor MI, manufactures and supplies pressroom automation and complete metal-



forming systems. At METALFORM, Güdel will feature a multimedia-backed communication system through which customers can interact and learn more about the company's equipment offerings. **write no. 4085**

Nitrogen-Gas Die Springs

Standfast Industries Inc.
booth 1724

Standfast Industries Inc., Wixom, MI, introduces three new series of nitrogen-gas die springs. The SD (Super Duty) 125 series, with a 25-mm-dia. cylinder, features steel double-bearing construction, and the stud-mount cylinder can be hoses with Standfast Micro-line hose and fittings. The HP2400 series, with a 75-mm-dia. compact cylinder, reportedly offers nearly 60-percent more on-contact force than a traditional ISO 75-mm-dia. cylinder. And, the CH132 series—the newest addition to the lineup—has a 32-mm-dia. body and employs custom seals and steel-backed bearings.

write no. 4086



Tool & Die and Machining Source

Reich Tool & Design Inc.
booth 1915

Reich Tool & Design Inc. (RTD), Menomonee Falls, WI, designs and builds complex, large metal-stamping dies. Stop by its booth to discuss its new resources, including a dynamic waterjet-cutting machine. This new technology improves machining capacity and provides an opportunity to expand and diversify into other markets. Another recent equipment upgrade is CMM software for part inspection, along with CMM reverse engineering. The design department also has been enhanced with more die designers and added seats of solid-modeling software. And, the firm plans to relocate to a nearby, new facility early in 2007, which will benefit its lean-manufacturing business services.

RTD also offers 3D high-speed CNC machining and precision wire-EDM cutting as stand-alone services.

write no. 4087



Management Software for Job Shops

Shoptech Software
booth 1861

Shoptech Software, Glastonbury, CT, a supplier of manufacturing software for job shops and make-to-order manufacturers, will showcase its recently released E2 Shop System 7.1. The E2 Report Wizard gives users enhanced reporting capabilities such as drill-down data navigation and on-the-fly sorting. The new release uses the latest technology from Crystal Reports (version XI Release 2). The Microsoft SQL Server 2005 also has been tested and approved with the release, reportedly making Shoptech the first in the industry to include the latest technology from Microsoft and Crystal Reports in its core product.

write no. 4088

Tool-Organization Centers

Jobi, LLC
booth 2224

Jobi, LLC, Orangevale, CA, introduces its modular tool-organization centers for CNC fabricators, press brakes and machining centers. The modular design



allows users to custom-design a tool-storage center to meet their individual needs. Stationary units are ideal for tool cribs, while mobile units are easily moved around the shop. Assembled, these centers have a 2800-lb. load capacity, and all components carry a life-time warranty.

Jobi offers more than 50 unique components to choose from, easing customized tool organization. Units for CNC fabricators can be designed to accommodate any Amada- or Strippit-style tooling. Press-brake components hold either European- or American-style tooling. Machining-center components are available for CAT or HSK tapers, as well as side collet trays for added convenience.

write no. 4089

Punch and Die Components

AW Precision LLC
booth 2138

AW Precision, Greendale, WI, produces headed, ball-lock and precision-ground blade-style punch and die components. It also offers nitrogen-gas springs and cam units. Specialist surface treatments are available to further enhance the life and performance of the firm's precision punches and dies.

write no. 4090

Automatic Nut Feeder

Dengsha America Corp.
booth 801

Dengsha America Corp., Bedford, OH, will display the Dengsha cassette-type automatic nut feeder. The



next-generation Dengsha feeder systems has the flexibility to feed 5-, 6-, 8- and 10-mm-square nuts from the same vibratory bowl. Advantages to the user include flexibility, increased productivity and high-speed selection.

write no. 4091

Die-Maintenance Program; Precision Die Shims

TruCut Inc.
booth 2011

TruCut Inc., Sebring, OH, offers a die-maintenance program that inventories replacement die steels and shims in users' plants. TruCut develops, monitors and manages the entire system to ensure that users have the right steels on-hand, thereby increasing press uptime and reducing die-maintenance costs. And the company's ShimPak precision die shims reduce die-sharpening time by as much as 50 percent.

write no. 4092



Part Pick-and-Place Automation

AP&T North America Inc.
booth 714

AP&T, Monroe, NC, will introduce its new four-axis Speed Feeder for picking and placing parts between multiple stations. The unit can pick and place at a rate to 15 parts/min., while lowering energy consumption and simplifying maintenance, according to company officials.

The unit can be mounted on a hydraulic or mechanical press frame, leaving the floor unobstructed and maximizing accessibility. It's capable of 180-deg. linear movement for pick-and-place applications. And, because of its innovative design, the center of gravity is consistent with the rotation, enabling the load to be rotated quickly without being subjected to centrifugal forces.

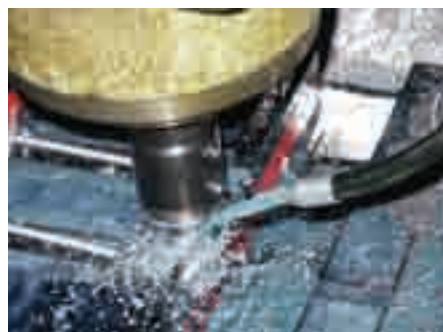


write no. 4093

Chemicals for Forming, Finishing

MS Fluid Technologies
booth 261

MS Fluid Technologies (formerly Mid-State Chemical and Supply Corp.), Indianapolis, IN, formulates specialty chemicals for the metalforming and metal-finishing industries. The company's most recent innovation is a full line of coolants for cutting, grinding, tapping, rollforming, tube rolling and other metalworking operations. These products are bioresistant without the use of biocides and DCH.



MS Fluid Technologies specializes in developing custom formulas that provide benefits for industry-specific issues. Company representatives offer consulting expertise to improve continuity in the

manufacturing process to achieve manufacturing production efficiencies and reduce overall manufacturing costs.

The company's products include a new multiphase performance stamping lubricant, Eco Draw HVRG, for forming of ultra-high-strength steel; an automotive-approved synthetic stamping lubricant; and complementary products such as cleaners and antirust agents.

write no. 4094

Conveyors, Feed Lines, More

Millutensil N.A. Inc.
booth 653

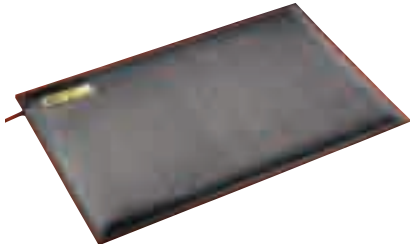
Italian manufacturer Millutensil, with North American operations in Toronto, Ontario, Canada, designs and builds dedicated servo feed/cut lines, uncoilers and straighteners; custom lubrication systems; and challenging conveyor systems. It's on the look out for agents and dealers.

write no. 4095

Impact-Resistant Pressure-Sensitive Safety Mats

Tapeswitch Corp.
booth 1442

The ArmorMat pressure-sensitive safety mat from Tapeswitch Corp., Farmingdale, NY, is designed with an impact-resistant, penetration-resistant internal



barrier. As a result, it withstands abuse such as gouging by dropped sheetmetal, piercing by sharp objects and pounding by heavy workpieces.

The ArmorMat is one of five distinct safety-mat product lines offered by Tapeswitch, which include the heavy-duty Diamond Plate and the ergonomic, anti-fatigue Comfort Zone. **write no. 4096**

Permanent Lifting Magnet for Flat and Round Materials

Eriez Magnetics
booth 844

Eriez, Erie, PA, displays the new XPL SafeHold permanent lifting magnets that can lift round or flat materials using the same magnet. Constructed with Erium 3000 rare-earth magnet material, the four new magnets in the SafeHold line are small, lightweight and feature a powerful magnetic force. The two-pole design provides lifting versatility and enables the user to lift flat materials to 2400 lb. and round materials to 1600 lb.

Operating the magnets is quick and simple, thus requiring fewer helpers. The magnets can lift and transfer steel and iron without slings, hooks or cables. When properly installed and operated, they provide greater safety than other mechanical material-handling devices, according to company officials.

Because no electricity is required, the potential of a power failure interrupting operation is eliminated. And the continuous

rare-earth magnet provides power until the magnet is turned off, eliminating a costly DC power supply or the hassles of charging or replacing batteries.

Several SafeHold magnets can be combined to conform to the specific shape and weight of complex workpieces. The XPL series is ideal for many machine-shop operations, including the loading and unloading of a machining center. Its internal on/off changeover mechanism means no scratching of the work surface when loading or unloading.



write no. 4097